



LIGHT ARMORED VEHICLE

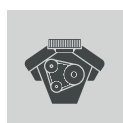
KOZAK-7

PRACTIKA

www.practika.ua



KOZAK-7 is produced on basis of world-known truck Ford F550. This vehicle is widely used for armored vehicle manufacturing all-over the world in virtue of following significant advantages:



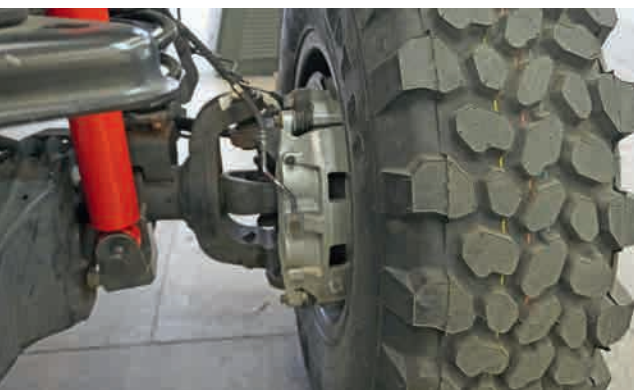
**good engine
transmission**



**ultradurable
frame**



**Service
all-over-the-world**



This makes Ford F550 ideal chassis for armored vehicle production... **while, it has some deficiencies:**

- Front axle has only 7500 lbs (3,4 t) payload capacity
- Full chassis payload capacity only 8,8 t.
- Front/rear axles weight distribution 39%/61%
- Brake system power calculated only for 8,8 t. weight

That's why suspension reinforcement is needed.

MERITOR TECHNICAL DECISION - COMPLETELY NEW AXLES



- Front axle with 12000 lbs (5,5 t) payload capacity
- Full chassis payload reaches 11,8 t. (+ 3,0 t.)
- Front/rear_ axles weight distribution 47%/53%
- Brake system power calculated for all 11,8 t. weight

Plus some additional advantages, that can't be reached using reinforcement

- Central Tire Inflation System
- JLTV milspec wheel ends
- Front axle differential block

BY THESE NEW MIL SPEC AXLES KOZAK-7 OBTAINS OFF-ROAD PERFORMANCE ON THE LEVEL OF TACTICAL VEHICLES

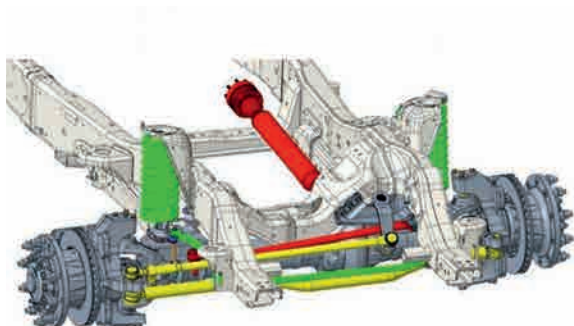
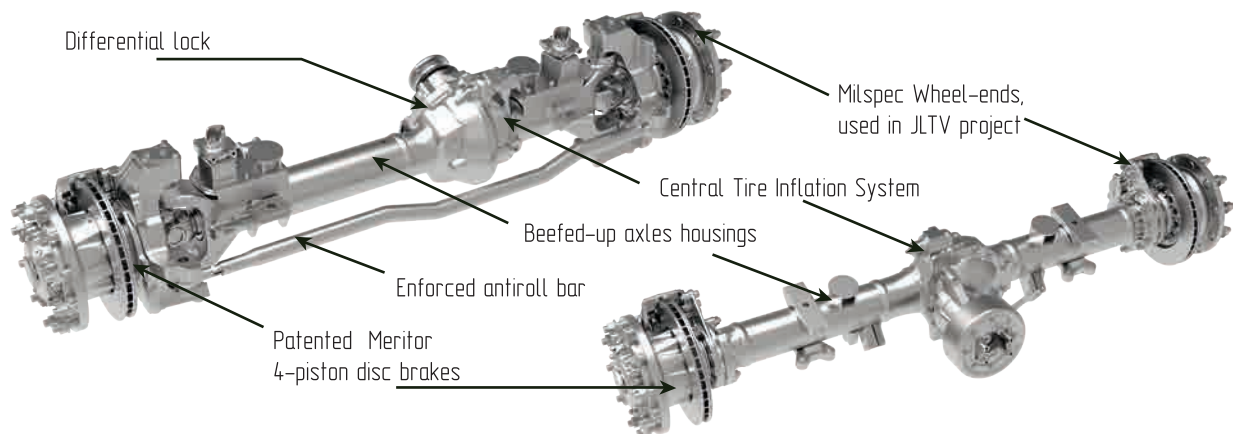


IMPROVED OFF-ROAD PERFORMANCE

- Increased axles payload capacity (11,8 t)
- Lesser turning radius (6,25 meters)
- Better driveability
- Higher wheel travel (305 mm.)
- Differential lock on both axles
- Central Tire Inflation System

ENHANCED RELIABILITY

- 96 000 km. durability testing (military duty)
- Higher durability of axles housing
- US military production wheel ends, used on JLTV
- Patented Meritor Quadraulic 4-pistons brakes
- Better axle-by-axle weight distribution (47%/53%),
- that prevents overloading of front axle

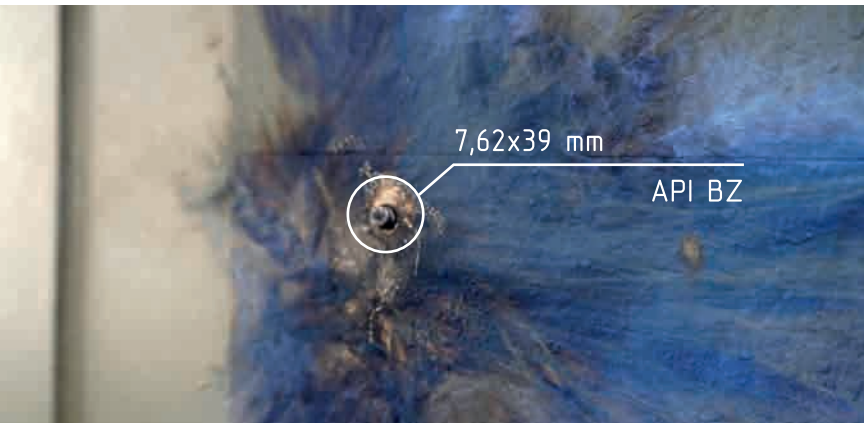


All newer parts are specially designed to match stock mounting places. It provides:

- Easiness of installation
- Reduction in cost
- Reliability

PROTECTION

KOZAK-7 has high level of ballistic protection – level 2 by STANAG 4569. Hull and turret are made of ballistic steel, produced by world-known manufacturer of protective steels Miilux Oy (Finland). In windows are installed the bulletproof glasses of same protection level.



DOORS



KOZAK-7 has unique design of doors – front lateral doors open on direction of vehicle's moving, while rear lateral doors open in opposite direction. This 180° opening provides additional protection (by armor planes of doors) for troops when they are landing on battlefield.

CLOSED TURRET



KOZAK-7 is equipped with rotatory turret, protected from all sides, from which the gunner can fire without risk to be hit.

Turret has following features:

- machine gun bracket (7,62/12,7 mm)
- bulletproof observation windows, providing maximum visibility
- manual/electric gear for rotating
- spinal rest for gunner
- gunner stand with adjustable height



CREW COMPARTMENT

Crew compartment of KOZAK-7 was designed bear in mind that crew can spent a long time inside vehicle during performing of combat mission. That's why crew compartment is spacious, with comfortable internal height, noise and thermal insulation. Every seat has individual holder for personal weapons and ammunition pans.

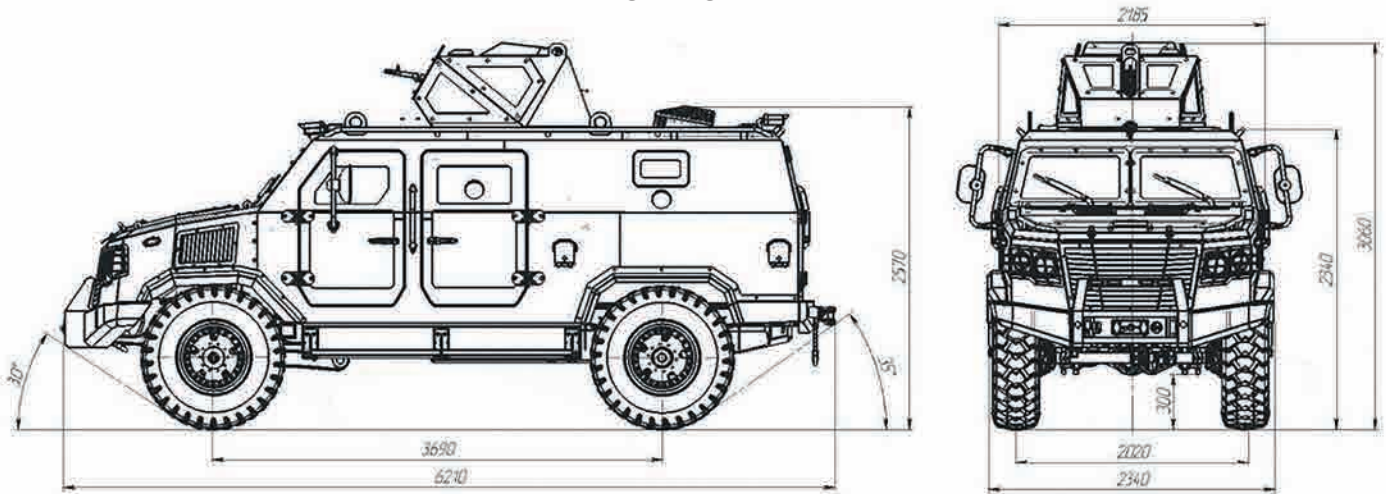


SPECIAL EQUIPMENT

KOZAK-7 is fitted with wide range of special equipment, intended to facilitate the performance of combat mission: radiostation, navigation system, 360° surveillance cameras (day and night modes) full-fledged climatic system (of enhanced power for hot climate countries), CBRN, automatic fire suppression system, internal lighting system with several light modes etc.



TECHNICAL DATA



GVW, kg	11 800
Engine	Ford 6.7L, diesel
Power, HP	330
Maximum torque, N*m	1109
Transmission	automatic
Number of speeds	10+1
Maximum speed, km/h	150
Operational range, km	600
Gradient	31°
Side slope	17°
Seating capacity	10
Ballistic protection	STANAG level 2



Ground Clearance 300 mm



Side slope 30%



Fording Depth 0,8 m.



Maximum speed 150 km/hm.

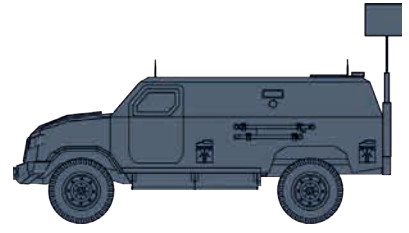
MULTIPURPOSE



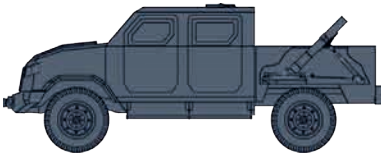
ARMORED PERSONNEL CARRIER



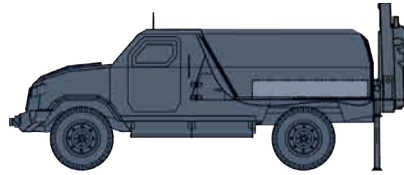
TACTICAL/RECONNAISSANCE VEHICLE



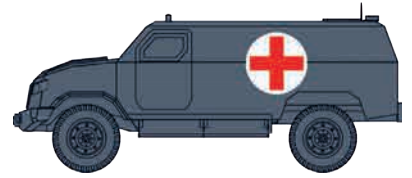
COMMAND-AND-CONTROL VEHICLE



MORTAR CARRIER



REPAIR VEHICLE



AMBULANCE

